

SYSTEMATIC LITERATURE REVIEW (SLR)
DEVELOPING STUDENTS CHARACTER PROBLEMS
THROUGH
EXAMPLE AND HABITUATION

Muhammad Rivaldi Ashari¹

¹Non-Formal Education Study Program Student,
Faculty Teacher Training and Education, Banten-Indonesia

Email address: 2221230094@untirta.ac.id

ABSTRACT

In this article, the problem of student character is through developing the role of teachers and student activities in schools in the era of globalization in preventing bullying and strengthening mental health. The aim of the article is to examine the formation of student character through activities at school, and through the role of teachers in the era of globalization. Character education is a collaborative effort that involves all parties in the school environment, including school personnel, parents and the community, in forming positive values and caring traits in children. In the context of character development, it is important to realize that the formation of strong character does not only benefit the individual, but also brings great benefits to the nation's civilization as a whole. As awareness increases about the importance of respecting parents, teachers and groups, honest behavior and integrity can be instilled consistently. On the other hand, dishonesty, cheating, as well as feelings of suspicion and hatred towards others will become obstacles in achieving the goals of character education. Through the research carried out, it is hoped that awareness of the importance of character education will be increasingly increased as a main priority that must continue to be maintained and strengthened.

Keywords: *Character education; Civilization; Habituation.*

INTRODUCTION

Learning which is the main foundation in building the progress of a nation, it cannot be ignored. Without learning Quality, a nation will have difficulty compete globally. In Indonesia, the system learning includes two main aspects, namely formal and non-formal learning. Learning the for malcan beapplied through the processdetailed, obviously, and there is a level learning different, ranging from the basic, medium, up to high levels. Meanwhile, learningnon formal is more flexible and not bound to strict rules,oftenheld outside the scope of the institution learning formal like in family or surrounding environment. Second typelearningIt has an important role in sustaining human resource development, maintaining sustain ability intellectual The community, and provide a sturdy foundation for the nation's progress ahead. Based on Law Number 20 of 2003, learning can be done based on Democratic and justice principle, where there should be discrimination in all its forms. The importance of planning in implementation learning is Berpurposeto learning can be achievedfull. The program learning Includes a whole series of activities that are well planned, involve all relevant aspects, and then implemented in the environment learning like at school. Program implementationlearningIt is responsible for the school, led by the principal as the main leader. In the context of learning

and its interactions with learners ,educators has a central role in running the program learning this. Besides being a teacher,educators also acts as educators aimed at realizing the success of the purpose learning set. This shows that educators not only in charge of teaching subject matter, but also in giving learning holistic characters tolearners.

Learning Characters become a major focus in efforts to strengthen the moral and ethical foundation in the midst of the social dynamics of the community, especially in Indonesia. That is, learning Characters occupy a central role in building strong roots of moral values in the next generation, so as to create a significant positive impact in social structures. The process of forming the character is directed at learners Schools are carried out through various approaches and activities specifically designed to dig and instill the desired character values. In this context, educator creativity plays an important role in developing programs that are able to form private individuals who have strong character, care for others, and are responsible for themselves and the surrounding environment. Thus, learning Characters are expected to be able to realize the young generation who are agents of change that brings good for the community as a whole.

Lately we often see several delinquency actions carried out by students. Various forms of delinquency of students increasingly coloring life today, making parents,educators, community leaders and even the government is anxious. As one alternative solution problem, the government establishes a strengthening policylearningcharacter for the whole community.



Picture 1. The number of children's protection cases Handled by KPAI

This research is an important initiative that aims to prepare the younger generation to have important qualities that can encourage positive change in the Indonesian nation. The implementation of learning Characters in school include planting religious values, increasing culture of literacy, and the implementation of extracurricular activities that are tailored to talents and every interest learners. By emphasizing the love of the country, environmental concern, and increased self-esteem, it can be concluded that the program learning Characters in elementary school have been effectively implemented and running successfully. Planting moral values on learners Not only encourages personal development but also contributes to the progress of the community by fostering individuals who are socially responsible, conscious, and proactive in shaping a brighter future.

RI President Joko Widodo highlights the importance of creating a superior human resource (HR) in the 2019-2024 period by emphasizing the need to implement 5 strategic actions that focus on various aspects. One of the crucial steps that must be taken is to improve the quality learning Characters that emphasize the implementation of the noble values of the Pancasila are consistently.

This means learning Characters are not only limited to subject matter at school, but a attitude and behavior that must be overalled to the students. Values such as affection, exemplary, morality, and tolerance of diversity must always be applied in the teaching and learning process to create a quality generation of quality and high integrity. Thus, efforts to improve learning Sustainable characters are the main foundation in building a strong HR foundation and is able to compete in this era of globalization.

Inoneside, party other argue learning, especially those concerning "moral and moral aspects", are very alarming. As if learning It does not provide adequate resonance to the development of students' personalities, and only focus on increasing academic achievement. However, it is important to emphasize that every unit learning Having important responsibilities in shaping the character of students in their school environment. Approach Learning Characters raise questions about abilities educators as a spearhead learning, in forming learner s which is not only smart but also has good character as the next generation of the nation.

Of course, efforts and efforts ed ucators very important role in educating characters learners. Educators Can refer to the Grand Design learning characters that have been designed by the Minis try Learning Nationally, as an effort to improve conformity and quality learning characters at all levels and types of units learning. The Grand Design is a conceptual and operational guidance in developing, implementation, and evaluating characters at all levels learning. In this context, the character configuration proposed in learning Characters include aspects: Hati (spiritual and emotional development), thought (intellectual development), sports and kinesthetics (physical and kinesthetic development), and taste and karsa (affective development and creativity) (Ministry Learning National, 2010).

Theoretically, there are two approaches offered by many parties in applying learning Characters at school. The first approach leads to placement learning character as a separate subject, while the second approach focuses on including learning Character as a mission of each subject or integrate it into each subject. Of the two approaches, it seems the second approach is more favored in the implementation process learning Characters at school. The decision to carry out the second approach is also in line with the statement of Deputy Minister Learning National, Fasli Jalal, delivered by Napitupulu, E.L (2010). Revealed that learning characters driven by the government to apply in schools will not add to the burden for educator sand learners. This is because the values are the core of learning Characters have been implied in the curriculum, but the understanding of these values has not been fully emphasized and integrated in learning. Therefore, learning Characters do not need to be taught as separate subjects, but must be realized through daily learning activities that have been running in the school environment.

Streng thening learning character is an important movement in the world learning which must be carried out by every unit learning. The aim is to strengthen character values and ethics to each student through an emotional, spiritual, intellectual and physical approach. This is done by involving various parties, such as units learning it self, family, and society as a whole. This movement is connected to the efforts of the national movement of the mental revolution launched by President Joko Widodo, with the main foundation of Presidential Regulation Number 87 of 2017 concerning Streng thening Learning Characters. In its implementation, learning Characters must be an integral part of the school environment, where five main values in building characters, namely integrity, religiosity, nationalism, independence, and mutual cooperation, must be reflected in the behavior of each individual in the school environment.

It is important to understand that the final goal learning Characters are forming individuals holistically. This approach is more than just creating a lifelong learner; Aiming to foster students who are able to develop their entire potential in a balanced manner. This balanced development includes

spiritual, emotional, intellectual, social and physical aspects. By emphasizing a holistic approach to learning, we overcome the general misunderstanding that learning only focus on academic achievement and ignore social, emotional, creative, and physical aspects of one's growth and development. Through the learning characters, learners not only equipped with academic knowledge but also with the skills and values needed to navigate life successfully and to develop their entire potential in harmony in various dimensions of their existence.

The students need to be prepared not only to achieve good value in the lesson, but also to be able to succeed in everyday life. To reach for this purpose, strengthening learning characters must be integrated thoroughly and well planned in the system learning. For example, through strengthening learning class-based characters, each educators have a vital role to apply positive values in the learning environment. Thus, good habits and implanted moral values will also become an integral part of the teaching and learning process.

In addition to class-based approaches, character strengthening can also be done through a framework learning school, family, and society together. In context learning school based, school is not just a place to seek knowledge, but also as a place to form and mature the character of students. Therefore, the role of the school is not only limited to the transfer of knowledge, but also as an institution learning which aims to form individuals who have strong positive values (value-oriented entrepreneurs). Thus, learning characters must be the main core of learning itself, to ensure students are able to contribute positively in society. In addition, the school is responsible not only in printing students who excel in science and technology, but also in character and personality.

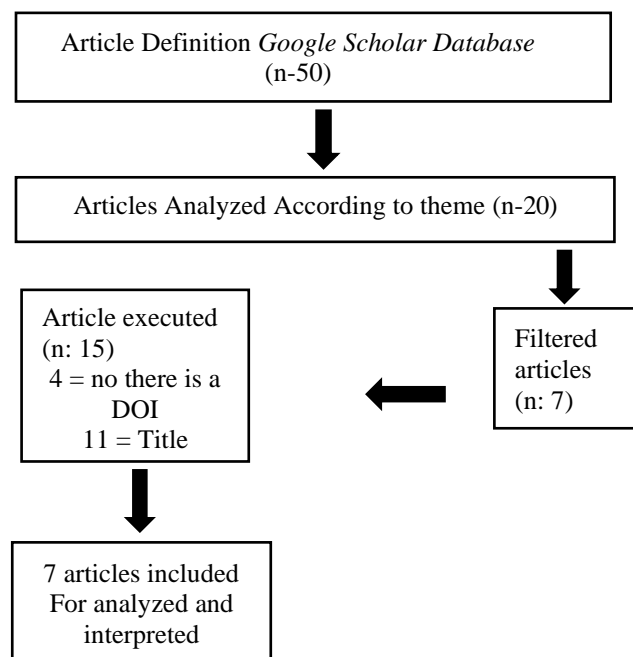
Furthermore, the family role in shaping the character of students should not be underestimated. Families and households should be used as first-loving learning, goodness, and moral principles. Expected, with the environment of "School of Love" at home, students will grow to become a person who has positive values and courage to travel learning at school firmly. This approach will not only affect individuals, but also the community as a whole. There are shared responsibilities in instilling good values and preventing negative behavior be expected to create a more harmonious environment. To realize learning sturdy characters, synergies are needed between exemplary, teaching, and strengthening. The exemplary of parents, educators, and the community can be a good example for students. Meanwhile, the teaching process must focus on the character formation and integration of local wisdom values in the academic curriculum. The character strengthening approach must also be carried out outside school and home hours, involving participation from all communities. The importance of learning the character lies in a joint effort to create balanced students in all aspects of life, ready to navigate the era of the 4.0 and Society 5.0 industrial revolution. Alignment between knowledge, attitudes, and skills must be the main target in the learning process. Gain learning continuous characters, expected students are not only smart academically but also have a strong moral and character. Efforts to educate successful characters need sincerity and awareness educators as an example for students. Besides the main competency according to the Law standard educators and lecturers, educators need to know the character they want to form the students as the main foundation in educating. The relevant character identification will be the main guide in the process learning sustainable character. Educators it can also refer to a variety of trusted sources to understand universal characteristics that need to be embedded in students.

RESEARCH METHODOLOGY

Research begins by identifying articles related to the topic of research that will be examined. Systematic review is a methodical approach to checking case studies certain by analysis of, evaluate, and choose a problem and formulate clear questions based on predefined criteria. In this research library reviews by using the Systematic Review (SR) method that is commonly known as

Systematic Literature Review (SLR), which is a systematic technique for collecting, critically assessing, integrating, and synthesizing research findings related to research questions. or interesting topic.

Systematic Literature Review (SLR) method is a systematic approach to identifying, evaluating, and synthesizing all relevant evidence of existing research related to certain research topics. SLR is a powerful tool to develop a comprehensive understanding of certain subjects and provide a strong foundation for, evidence-based decision making. The main objective is to identify, review, and evaluate all relevant research. Initially the research question was: how to do it educators disciplining character formation on learners At school? Systematic reviews involve identification, evaluation, and selection of certain problems, answer questions clearly based on predetermined criteria. Furthermore researchers seek a source or reference journal of other researchers relevant to the title of the article chosen. After 50 journals were identified, a compression process was carried out so that 20 selected journals were obtained in accordance with the title of the discussion. After including and reviewing the 20 journals, seven journals were chosen to be discussed according to the topic. The flow diagram describes the exclusion and inclusion process at the systematic literature review stage (N: number of journals).



Picture 2. Diagram related Step Systematic Literature Review

RESULTS AND DISCUSSION

RESULTS

LearningIt has a very important role in building a strong foundation for the progress of a nation. Therefore, mature planning in program settings learning become crucial to achieve learning Maximum. In the implementation, cooperation between all parties, especially educators As a learning implementer, it is inevitable, especially in character formation learners. Learning character is a component that is no less important with learningac ademically, because it ensures that learners Not only smart in terms of know ledge, but also in managing their emotions well. This is an important key in forming individuals who are able to solve problems wisely without hurting

themselves or others. Unfortunately, the trend of decline learning Characters are seen through the phenomenon of the rise of bullying acts in circles learners Primary school. Bullying, as a form of adverse aggression, has root causes that vary, ranging from a conflict family environment, to the influence of a less educational spectacle, as well as the lack of community environmental awareness and expertise educators In handling bullying cases in the school environment. (Arespi,2022:138).

Because parents are the first role model for children, they play an important role in shaping the behavior of their children. By providing a positive example, instilling good habits, fostering open communication, and involving children in household activities, parents effectively form children's character early. As a result, the values and virtues implanted by parents to help children develop self-confidence, resilience, and the ability to navigate the environment effectively. The influence of parents is more than just guidance; This creates a strong foundation in which children can build their personalities, make them more adaptable and more ready to develop in their environment. Through consistent guidance and positive reinforcement, parents not only teach children what is right and wrong but also give them the tools needed to grow into intact individuals and are able to contribute positively to the public. (Adnan,2021:135). Questioning the culture and character of the nation today greatly seized the attention of the public. This examination includes a variety of aspects of life, which is carefully described in various written articles in print media, in-depth interviews, interactive dialogue, and fluent speeches broadcast through electronic media platforms. It is clear that the spotlight is very focused on dissecting our complicated structures of our culture and the essence of our national identity. When each of the media explores this discussion, collective awareness is sensitive to core issues that form our society's order. Through the perspective kaleidoscope, ranging from scientific analysis to direct experience shared in honest conversations, the multifacetedness of our cultural environment unfolds. Exploration without stopping on these themes signifies a critical point in the ongoing narrative of the people's evolution, which urges us to reflect on the values and norms that define us as a nation. The exchange of ideas and dynamic opinions in this discourse reflects the pulse of the people who wrestle with past, present, and their aspirations for the future.(Utomo, 2017: 23).

Alex Agboo in a journal entitled BRING Character Education Into Classroom (2012: 23). States that Policy regarding problems learning must take proactive steps in implementing learning moral in the school system. Important for parents,educators, and the administrator to unite as stake holders to collectively support learners In realizing positive values in their lives. Therefore, introduction learning Characters in schools or madrasas are needed to ensure that character development does not only depend on the family but also fertilized in the environment learning. Schools play a second home forlearnersIn terms of instilling good habits. The importance oflearning Characters can be seen from various social phenomena observed today, which shows the importance of individuals showing Exemplary behavior. Examples of the crunchy nation character can be detected through the emergence of negative behaviors in various layers of society, both the general public, students, and various other circles. This manifestation shows not enough or even the absence of characters in accordance with community norms in the current context.

Lickona in Samani and Hariyanto (2011: 44) Interpret Learning Character is seen as a process that is carefully arranged and conscious to improve the quality of personality and moralitylearners. This character is defined as the values that regulate human behavior towards God Almighty, ourselves, others, the environment, and the nation, through the manifestation in mind, attitudes, feelings, words, and actions adrift of religious norms, law, manners, culture, and customs. Learning Characters focus on various efforts made by all components in the school environment, even involve the involvement of parents and community members together in guiding children and

adolescents to be able to internalize the values of love, strengthening character, and understanding of responsibility. (Daryanto, 2013).

In responding to bullying events, it is important for parents to teach and strengthen children so they do not feel afraid and have strong self-confidence. In addition, they also need to be taught to choose friends wisely in daily association. In addition, it is also necessary to provide insight against them that they have the right to defend themselves in preline, or even feel the need to give a reply. It should be realized that the issue of bullying in Indonesia is not something new, but has become a very common case and tends to increase every year. These bullying cases spread to various life sectors, including in the field learning Basic in Indonesia. Therefore, it becomes very important for parents to provide sufficient direction to children about the importance of having the attitude and courage to deal with and resolve bullying problems in a wise manner and according to good values.(Wulandari,2022:480).The age of school children 6-12 years is one of the factors that affect bullying. The bullying behavior can certainly cause short and long term influences on the victims.

Researchers and Year Research	The Journal	Results Research
Darmawan, D. Rosmilawati ,I., 2020	Strengthening Learning Character Through habituation activities in the package C program at the PKBM 21 Tebet East Jakarta institution Jakarta	In this study aim to determine strengthening Learning Character through habituation activities in the Package C program at the PKBM Institute of Tebet Timur Jakarta. The focus of this research is the planting of character values through 5 important values in meeting religious characters, independent nationalists through mutual cooperation and integrity. This research is a descriptive study with a qualitative approach. The results of this study indicate a strong commitment from PKBM 21 Tebet Timur in running a character strengthening program. First, nationalist value is emphasized by celebrating important days such as National Batik Day and Kartini Day, where learners required dressed according to tradition to form love for the country. Second, religious values are practiced through routine and thank full recitation activities, which aim to maintain a spiritual relationship learners with God. Third, integrity is encouraged through responsibility learners, like the class and involvement in PKBM activities to increase the sense of own. Fourth, independent values are implanted through entrepreneurial teaching and independent assignments, so that learners Learn to be independent and responsible. Fifth, the mutual ration value is applied in routine hygiene activities with active participation learners, to form a useful

		sense of mutual help in the community. All of these efforts aim to form character learners Which is qualified and cares about the surrounding environment.
Silkyanti, 2021	Analysis of religious school culture roles in character formation Learners	This study also revealed that the school culture that was religious in elementary school Muhammadiyah 17 Semarang has strong characteristics in daily practice, such as a manners, smile, greetings, and warm greetings, and shared prayer activities, memorization, Tajwid learning and Qur'an (Tpq), prayerduha, and prayer dhuhur. In addition, the method applied includes the exemplary of the educator sand the development of positive habituals in everyday interactions. As a result, characters that appear on learners Including very religious in worship, discipline in carrying out rules, tolerant of differences, friendly in association, and responsible for their actions and obligations. This is a hemisp here of research that shows how vitally the role of religious school culture in shaping positive characters on learners.
Widia Sari, 2024	The role of Educators Islamic education in character formation Learners Through curriculum merdeka studied at Learners Class Xf At SMA 1 Mempawah Hilir Lesson 2023-2024	This study aims to explore and understand the role educators learning Islam in shaping character learners Through the independent learning curriculum in class XF SMA 1 Mempawah Hilir Lesson 2023-2024. This study focuses on investigating how contributions educators learning Islam against the development of characters through the Learning Merdeka Curriculum. "Learning Merdeka" policy that was proclaimed by the Minister Learning and culture Nadiem Makarim is part of the effort to improve the system learning National by prioritizing independent thoughts. Learning Islam, as subjects expressed formally in schools and informally at home and society, covers topics from the leve l learning up tolearning Height, must be actively involved in this independent learning initiative. By using the Library Review Methodology, it can be concluded that the learning approach Learning Islam with the concept of "independent learning" is designed to equip students with critical thinking skills, creativity, communication skills, and collaborative skills to foster the application of mature, wise, and practical science. Islamic teachings in everyday life.

<p>Jusnawati, Tahir Malik, Harisah, 2024</p>	<p>Strategy Educators Learning Religion in character formation Learnersin MTS. Yadi Bontocina Sub-district Turikale Maros Regency</p>	<p>This study focuses on disclosing data and information about various aspects in MTS. Yadi Bontocina, Maros Regency. First, digging the strategy used by educators Learning Islam in shaping character learners at school. Second, explore the method used to instill character development among circles learners. Finally, reviewing the strategy applied by educators Learning Islam in shaping character learners. The findings show that school efforts in developing human resources are very suitable to do. This is mainly achieved through coaching of high moral values and discipline, which is an important factor. However, given the challenges caused by globalization and significant socio-cultural transformation, it became important to prioritize mental and moral guidance for learners In order to effectively implement a well-structured and efficient structured management system.</p>
<p>Junindra, Fitri, Desyandri ,Irda Murni, 2024</p>	<p>The role of Educators for behavior Bullying in elementary school</p>	<p>On This research etode is a study approach literature which involves collecting data through reference journals, relevant literature, and reading, noting, and managing information from previous studies. Analysis of various sources and exposure to relevant research has highlighted variations in roles educators in handling cases bullying. Found that every educators Have a unique approach in dealing with this problem. Research also confirms that educators have a crucial role in preventing cases bullying in the elementary school environment. Their functions include guidance, advice, direction, coaching, and provide a positive example for good behavior in school.</p>
<p>Aswat, LaOde Onde, Ayda, 2022</p>	<p>Existence of Streng thening Role Learning Character of behavioral form Bullying in the elementary school environment</p>	<p>This research was used as a reference in developing various activities in the reinforcement program Learning Characters that can certainly educate and give birth to a generation of moral, dignified, and love of peace. This is an important effort in building a solid foundation for the development of individual characters, so as to be able to contribute positively to the wider community. Based on the discussion of this research above, then learning character when done with principles, strong commitment from educators, and the supporting community environment, can lead to a person who has high integrity,</p>

		<p>courage to face challenges, and awareness of the importance peace. By learning Characters must be done carefully, it must be emphasized that parents' involvement, educators, Principal, Community, and a supportive environment, will form a strong foundation to form the character of students who are in line with noble values.</p>
<p>Larozza, Hariandi, Sholeh, 2023</p>	<p>Strategy Educators in over coming behavior Abuse (Bullying) Through Learning Character on Learners High grade Sdn 182 / i protected forest</p>	<p>The research findings have resulted in a convincing conclusion regarding the success of implementing strategy educators in over coming behavior bullying through the learning character among learners Middle school. Stressed that educators has an important role in strengthening character learners, this is very important as a strategic effort to strengthen the nation culture. Character development program learner need to be addressed holistically in the system learning, remember learners Today is the leader of the nation's future. Growing students who have strong character is a solid foundation in forming a strong nation civilization. The success of these efforts depends on the alignment of the learning process with the character. Character-based learning is prepared in accordance with the normative and holistic principles, aiming to form students to become individuals who have strong moral fibers, a gentle heart, firm determination, and extraordinary achievements, so that they grow positive behavior, preventing events abuse, and instill good moral values on children. their daily life. The hope is that the results of this study can provide valuable insights for further research in this field.</p>
<p>Mutiara, Quratul Ain, 2021</p>	<p>School strategy in forming character learners in elementary school</p>	<p>Research shows that school strategy planning plays a crucial role in forming character learners Class V. Factors such as mature planning, activities in and out side the classroom, as well as the availability of adequate facilities and infrastructure greatly contributing to the development of religious, disciplined, and environmental concerns learners. Learning the character of discipline and religious becomes the main pillard Natural Context Development of Discipline and Religious Characters, the Importance of Roles educators And parents cannot be taken lightly. Educators not only in charge of providing learning, but also a exemplary that can</p>

		<p>inspire learnersto strengthen these attitudes. Meanwhile, on the other hand, parents also have a very significant role in creating a family environment that supports the development of children's character in terms of discipline and religious. Close cooperation between schools and families is the main foundation in realizing a holistic character that includes these values. Strong synergy between learning At school and parenting at home will have a positive impact on the formation of children's character. The biggest challenge faced is how to achieve consistency in aligning the values of these characters into the curriculum and everyday lifelearners, so it achieves optimal results in the formation of the character of the discipline and religious sustainable. In volvement active from all related parties, including the government, school, educators, parents, and the community, become a necessity to achieve generation formation goals that are not only superior academically, but also have moral integrity and spirituality strong, especially in the midst of the flow of globalization that increasingly color the world learningin Indonesia.</p>
--	--	---

Table 1. Results of Research on Exmplary Character Problems and Habits

DISCUSSION

From the results of research contained in the seven journals, it can be concluded that the role of the principal's leadership is very crucial in forming a learning environment that is free of bullying acts. As a leader in the school environment, a principal must be an example for all school members by prioritizing positive and anti-bullying behavior. Not only that, the principal is also responsible for creating a conducive school culture and supports anti-bullying values. On the other hand, the exemplary of the people educators too can be Berbig impacton the character building learners. Educators It is expected to be able to act as a good example by showing polite attitudes, behaviors and languages and appreciating diversity. Important foreducators To provide concrete examples in handling bullying cases professionally and wisely so that character values such as honesty, concern, and politeness can be strongly embedded in every learning. In addition, effective class management implementation is also an essential. This management is not only limited to sanctions or punishment, but also involves learning planning that focuses on streng thening character values at any time, so that learning goals are more directed and clear.

Class physical environment that does not support the streng thening of characters that respect each other and vulner ability, and has the potential to cause violence, making the use of learning methods not optimal in growing skills learners Like critical thinking, creative thinking, communication and cooperation. Therefore, efforts are needed to create a learning environment that facilitates together together learners In the study group to encourage unity and mutual respect. In

addition, character formation learners through the learning Moral does not only have to be centered on religious and PKN subjects, but it must also be applied to the themes of learning that includes essential values, which is certainly based on the vision of the school mission. Learning Characters are key in forming a person who has good moral quality in all lines of life, including in the family, school and community environment. Therefore, implementation learning Characters become essential both in the family and school environment to create individuals who have balanced intellectual and moral abilities.

This is important to understand that characters are things that are not only learned through knowledge, but also through behavior shown. Therefore, for students, it is important to be given concrete and real examples in the process of internalizing the character. Showing the model or exemplary will greatly help the acceptance and understanding of the character. Fruit from learning Characters are not only seen in the theories taught, but also in real practices that can be applied in everyday life. The community learning It is necessary to ensure that students do not only understand the character both through texts in textbooks, but also through the exemplary figures around them. With an example that is close to the students, learning Characters can run more smoothly and effectively in the school environment. Thus, the role of exemplary figures in influencing the formation of students of students becomes very vital and needs to be seriously considered.

CONCLUSIONS AND SUGGESTIONS

Educators must run a good exemplary role for learners With consistency in showing behavior, attitudes, and positive values everyday. Through the exemplary shown by educators, learners Indirectly will be encouraged to learn and follow good behavior in everyday interactions. It is important for schools to create a conducive environment and a culture that supports character formation learners with the aim of preventing the occurrence of bullying cases in the environment learning. Habituation of positive values such as discipline, honesty, responsibility, and caring attitudes must be routinely encouraged and consistently in daily activities at school. In addition, it is important to make the examples the basic principle in efforts to support character formation learners. Implementation of learning effective characters in school must involve active participation from all components of the school citizens, including educators, staff, and parents learners. Harmonious cooperation between schools and parents is very vital in strengthening planting character values on learners. To support application learning Characters in school, clear and directed policy support is needed from the government and other related parties. Supporting and focused policies will help facilitate implementation on learning character maximum and efficient.

Based on the above conclusions, there are several recommendations aimed at stake holders. First, every educators subjects are expected to carry out learning characters through moral values implanted in learning to form characters learners. Each educators expected to be an example in instilling His noble properties learners so it effectively forms its character. Second, all stake holders involved in the process learning Schools are expected to form a moral community responsible for success learning characters. Third, family and society are encouraged to become partners in character formation efforts learners. Fourth, the government was urged to perfect the recruitment system educators With more attention to mental stability, intellectual capacity, professionalism, and high morality as capital in guiding learner according to academic qualifications and achievements. The collaborative efforts of all parties involved are very important in instilling strong moral values and character development on learners, thus producing experience learning More holistic and effective that foster extensive individuals who are ready to make a positive contribution to the community.

REFERENCES

- Aswat, H., La Ode Onde, M., & Beti, A. (2022). Existence of Strengthening Role Learning Characters against the form of bullying behavior in the elementary school environment, Learning Pancasila character in learning.
- Director General of Dikdasmen. (2016). Guide to School Literacy Movement in Upper High School. Jakarta: The Ministry of Education and Culture of the Republic of Indonesia.
- Darmawan, D., Rosmilwati, I. (2020). Strengthening Learning Characters through habituation activities in the Package C program at the PKBM 21 Tebet East Jakarta institution.
- Junindra, A., Fitri, H., & Irda Murni, D., (2024) ,. The role of Educators against bullying behavior in elementary school Learning The value of Pancasila to build policies Learners Primary school. Proceedings of the National Seminar Learning Educators Elementary school, 2 (1), 40-44.
- Jusnawati, U., Tahir Malik, M., & Harisah, A. (2024) Strategy Educators Learning Religion in character formation Learners on MTs. Yadi Bontocina, Turikale District, Maros Regency, 6 (1), 39-49.
- Larozza, Z., Hariandi, A., & Sholeh, M., (2023). Strategy Educators in overcoming the behavior of dancing (bullying) through Learning Character on Learners High grade Sdn 182 / i protected forest.
- Silkyanti, F., (2021). Analysis of religious school culture roles in character formation Learners.
- Shinta, M., Qurattul Ain, S., (2021). School strategy in forming character learners in elementary school.
- Isgandi, Yiyin. (2019). Exemplary and educator intensity in praying: Optimizing success Learning Characters. Research journal Learning, Volume 1 number 1, p. 1-19
- Widia Sari, D., (2024). The role of Educators Education of Islam in character formation Learners Through the independent curriculum studying on Learners Class XF in SMA 1 Mempawah Hilir Academic Year 2023-2024 (Journal of Education Studies), 5 (1), 94.
<https://dii.org/10.15642/jpai.2024.5.1.94-115>